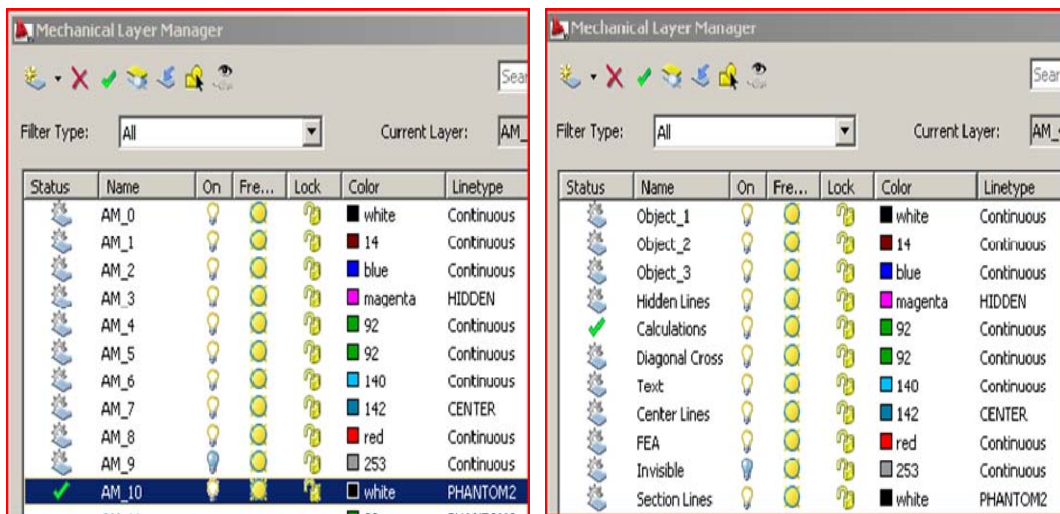


## Automatic Layering in AutoCAD Mechanical

A key part of drafting in a CAD system is separating the data and geometry you create and controlling how the geometry is displayed. Through the use of layers, you can do both. Because AutoCAD Mechanical manages the placement of geometry onto layers automatically, understanding how to create and configure layers is essential to adhering to a standard that meets your company's requirements.

The following illustrations show the default layer names on the left and the same layers after they were renamed on the right.



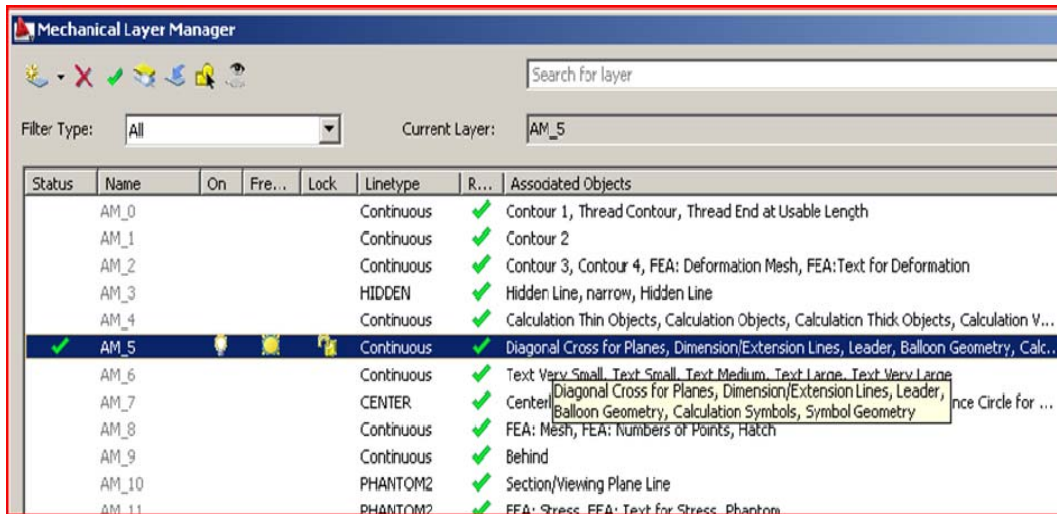
### Mechanical Layer Manager

From within the Mechanical Layer Manager, you can:

- Create and edit AutoCAD and Mechanical layer and properties.
- Convert AutoCAD layers to Mechanical layers.
- Import layer information and settings.
- Set a layer definition as the current layer and have the predefined layer added to the drawing.
- Map lineweights for the layers and colors.

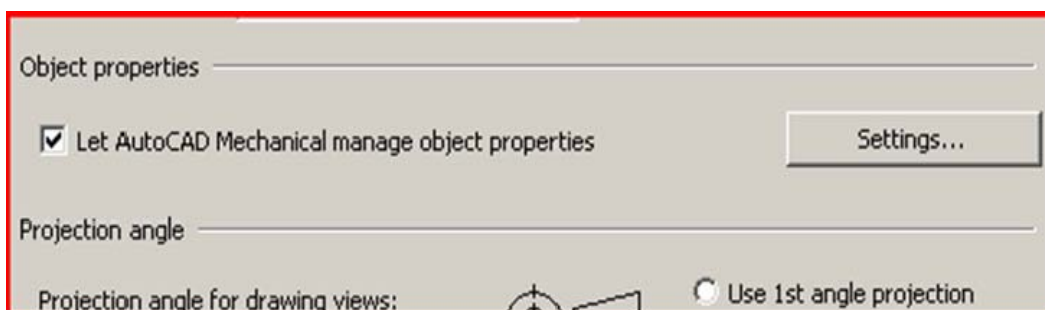
## Mechanical Layer Manager and Associated Objects

The Associated Objects field for a layer lists all of the objects that are currently configured in the standard to be automatically created on that layer. This information helps you understand the impact on your drawing geometry if you modify the properties of the layer. In the illustration below when the cursor is hovered over the Associated Objects field for the Mechanical layer AM\_5, a tooltip displays listing all of the geometry that is mapped to that layer.

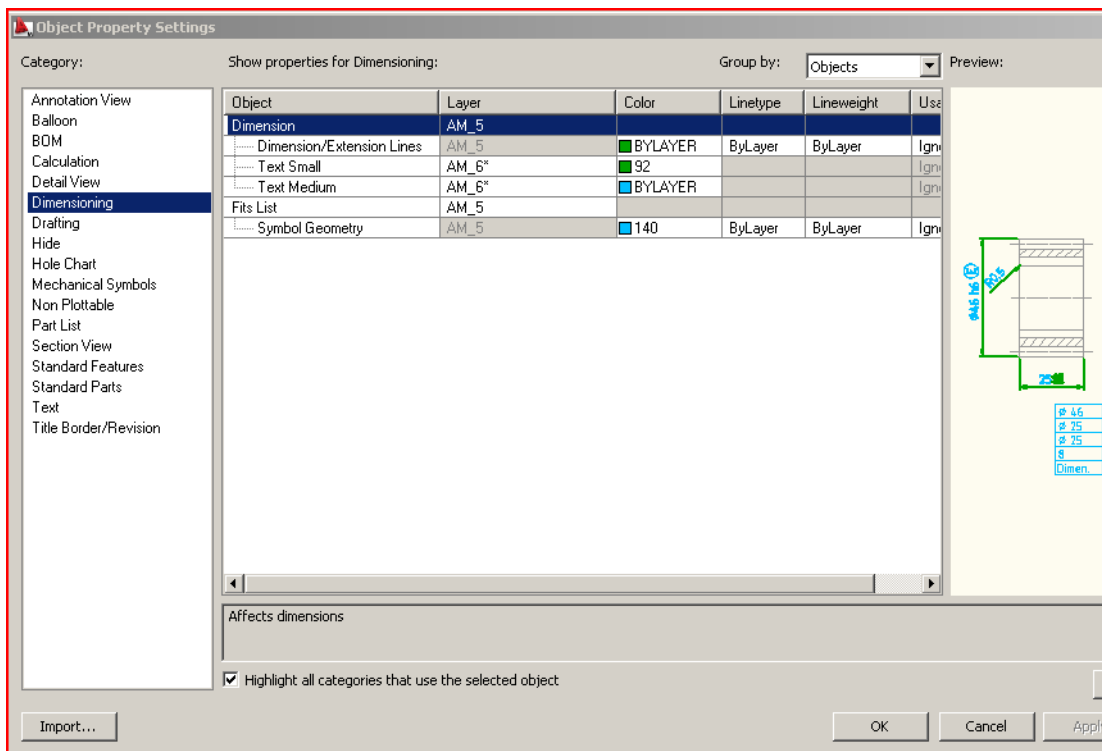


## Object Properties

The properties of the various objects AutoCAD Mechanical creates such as balloons, dimensions, text and so on, are mapped to specific layers automatically so long as you allow AutoCAD Mechanical manage those objects, which is highly recommended. By double clicking on the active standard in the Standard elements list under the Options dialog box, you can access the Standard Settings for the current standard. In this dialog you can decide if you want AutoCAD Mechanical to manage object properties, as shown in the following illustration.



Selecting the Settings button to the right of the checkbox will bring up the Object Properties Settings dialog where you can configure the what layer, color, linetype and lineweights are used for the various object created in AutoCAD Mechanical. This will allow you to “set it and forget it”, those objects will always go on the “correct” layer, as per your personal or company standard. The only time you will have to manually switch layers is when you create the basic geometry that you actually draw.



Automatic layering is just one configurable part of an overall standard that will provide consistency and continuity to all of your company’s drawings. This is only found in AutoCAD Mechanical, the best solution for the creation of 2d mechanical drawings.