

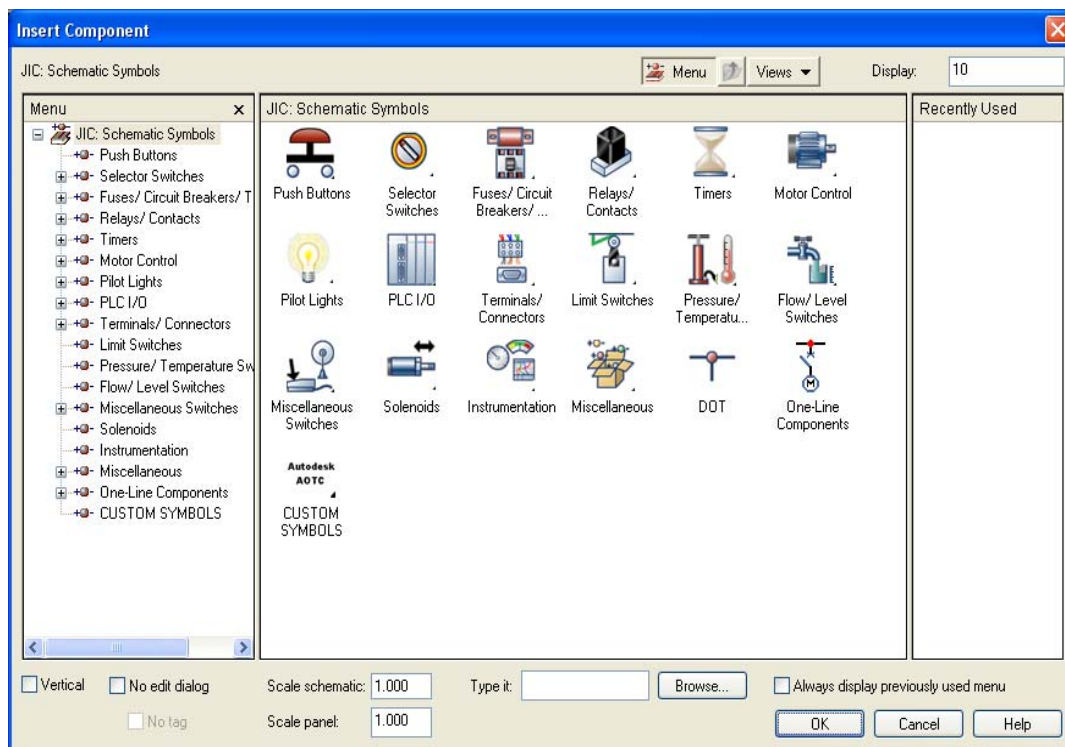
## How to Convert Non AutoCAD Electrical Blocks.

AutoCAD Electrical provides the user with several tools to aid in the conversion of standard AutoCAD objects into intelligent AutoCAD Electrical objects. If you have used standard AutoCAD in the past there is no need to throw away any of your existing data. If the user has a library of existing blocks that you would like to use inside of AutoCAD Electrical you will want to take advantage of the conversion tool below.

### Convert non-AutoCAD Electrical blocks

This utility takes non-AutoCAD Electrical blocks or graphics representing a symbol and replaces them with an AutoCAD Electrical block and transfers the attribute or text values to this new AutoCAD Electrical block.

1. Click Conversion Tools tab
  - Tools panel
  - Schematic Conversion dropdown
  - Convert to Schematic Component
2. Pick your non-AutoCAD Electrical block containing attributes and text entities.
3. Pick an AutoCAD Electrical block from the Insert Component dialog box to use in its place. *Click OK.*



4. Specify the insertion point.
5. From the Component Parent/Stand-Alone Annotation dialog box, assign text/attribute values to AutoCAD Electrical attribute names and *click Done*.
  - If you're non-AutoCAD Electrical block has attributes, or you picked some text entities, the dialog box includes buttons to make it easier to assign your values to AutoCAD Electrical attributes.

**Component Parent/Stand-Alone Annotation**

Hide

Pick	<input type="checkbox"/>	>>Tag			
Pick	<input type="checkbox"/>	>>Description 1			
Pick	<input type="checkbox"/>	>>Description 2			
Pick	<input type="checkbox"/>	>>Description 3			
Pick	<input type="checkbox"/>	>>Installation		Drawing	Project
Pick	<input type="checkbox"/>	>>Location		Drawing	Project
Pick	<input checked="" type="checkbox"/>	>>Manufacturer			
Pick	<input checked="" type="checkbox"/>	>>Catalog			
Pick	<input checked="" type="checkbox"/>	>>Assembly			

Miscellaneous Ratings Positions Pins

Delete picked text objects

Zoom Window Zoom Extents Zoom In Zoom Out Pan

Done Cancel Help