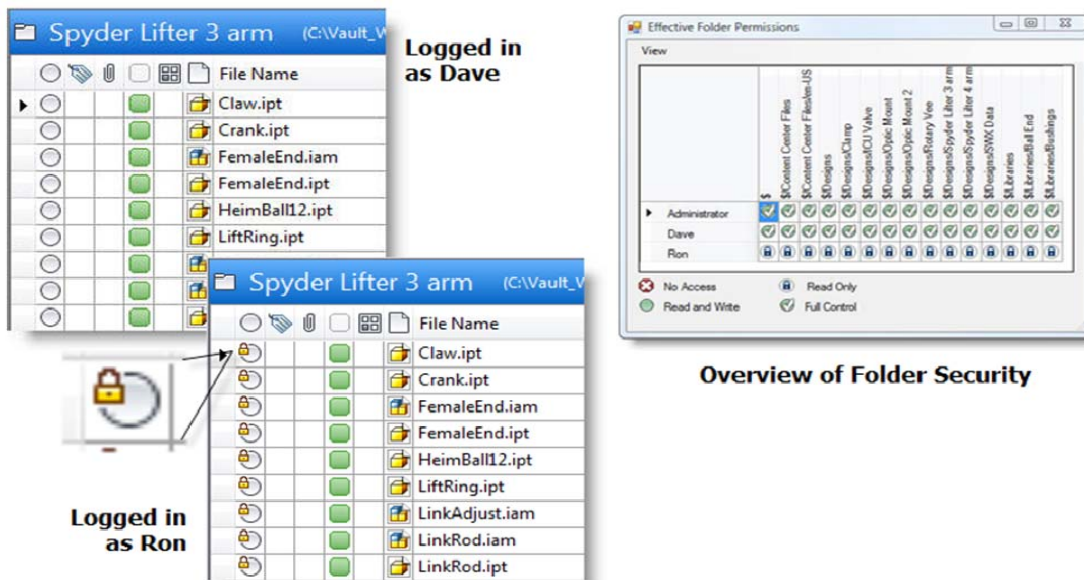


Two tips for your Vault security

As the title implies, today's tip is about Vault Security. Not about setting it up, but managing and maintaining it. Setting up a security model with a clean install and a fresh group of users is a challenge in itself. As new users are added or removed, as projects and folders are created, security can often get confusing or worse yet compromised.

The first tip isn't really a tip but a recommendation. If you are using any of the Vault 2010 family of product, download and install Autodesk Vault 2010 Update 1. Along with delivery of some hot fixes and other updates, Update 1 brings back the sorely missed lock icon. The lock icon is a visual cue to the status of a file when browsing in Vault Explorer. Files can be locked for a number of reasons, folder security, lifecycles states, and user roles. The lock icon was available in Product-stream 2009 but was removed when the 2010 product line was released. If a user does not have the capability to edit/checkout a file, a lock icon will appear in the vault status column. Whatever the reason for its removal, I am just glad it's back. The example below shows the same folder in Vault when viewed by 2 different users. The other image is the second part of my tip.



Overview of Folder Security

Part 2 of my tip has to do with the maintenance and management of the folder security feature in Vault Workgroup, Collaboration, and Manufacturing. It can get pretty confusing once your vault is loaded with directories and sub directories, users and more users. Doug Redmond from Autodesk wrote an extremely handy utility to provide a visual look into the folder permissions for your vault. You can download this handy utility from Doug's Blog "It's All Just Ones and Zeros". <http://justonesandzeros.typepad.com/blog/2009/11/effective-folder-permissions.html>