



Tip and Trick Week of 03/7/10

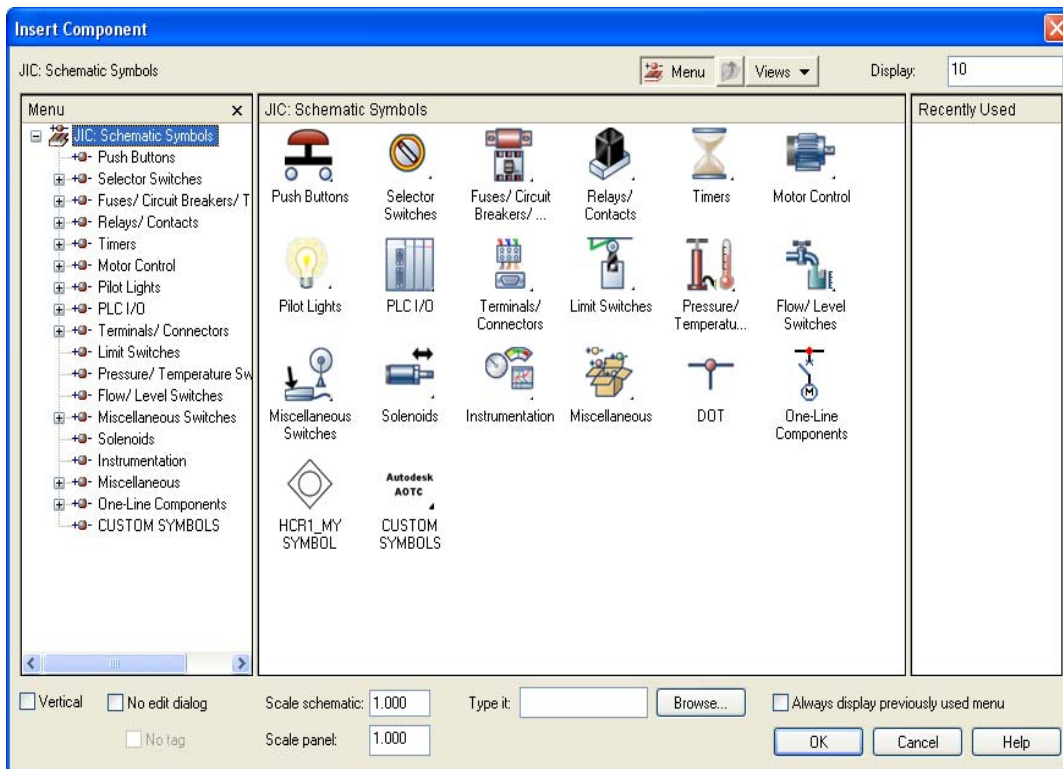
Convert non-AutoCAD Electrical Blocks

This utility takes non-AutoCAD Electrical blocks or graphics representing a symbol and replaces them with an AutoCAD Electrical block and transfers the attribute or text values to this new AutoCAD Electrical block.

Step 1 Click the Conversion Tools Tab
>Tools panel
>Schematic Conversion drop-down
>Convert to Schematic Component Icon

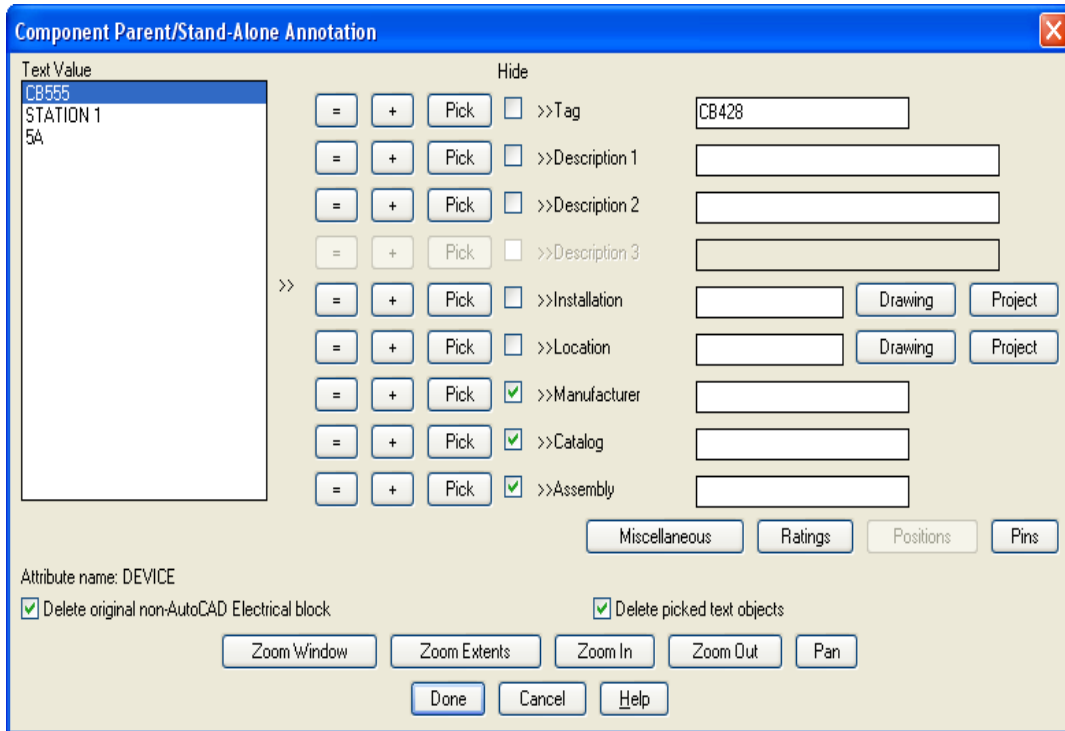
Step 2 Pick your non-AutoCAD Electrical block containing attributes and text entities.

Step 3 Pick an AutoCAD Electrical block from the Insert Component dialog box to use in its place.



Step 4 Specify the insertion point.

Step 5 From the Component Parent/Stand-Alone Annotation dialog box, assign text/attribute values to AutoCAD Electrical attribute names and click Done.



If you're non-AutoCAD Electrical block has attributes, or you picked some text entities, the dialog box includes buttons to make it easier to assign your values to AutoCAD Electrical attributes.