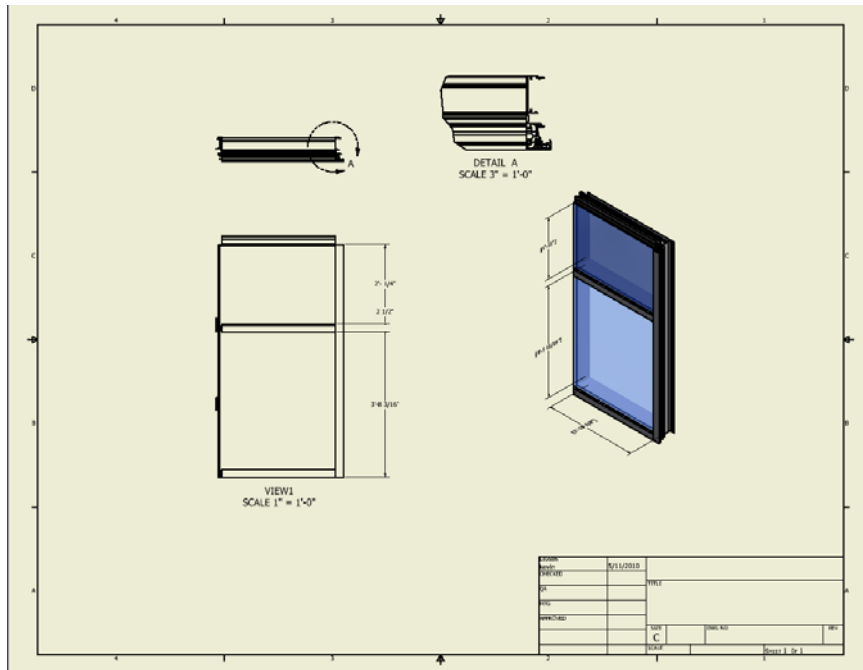


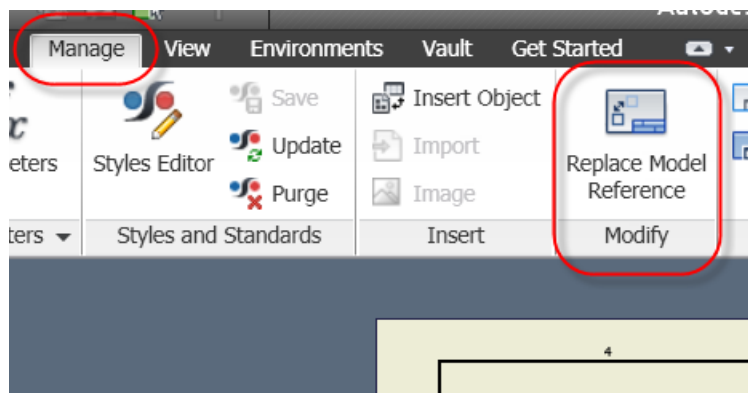
AutoCAD Inventor 2011: Replace Model Reference within a drawing

With all the references and relationships that are created and maintained with AutoCAD Inventor, trying to replace a model within a drawing in previous releases (non-vaulted environment) was a daunting task. The user either had to use Design Assistant or had to try to do it with manual work-around. Now, in AutoCAD Inventor 2011, they have given us the Replace Model Reference command for just this task.

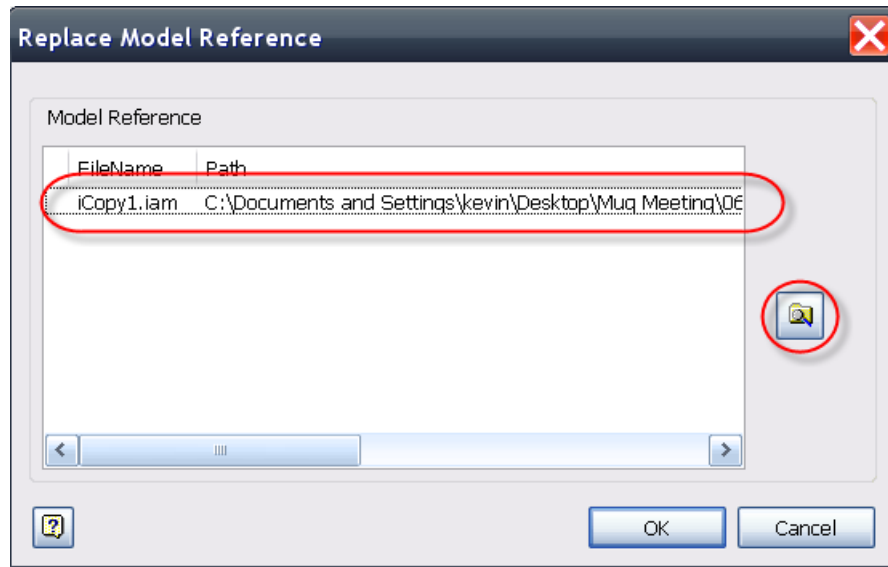
Start with an existing drawing. (Note this tool can be used at any point during the drawing creation)



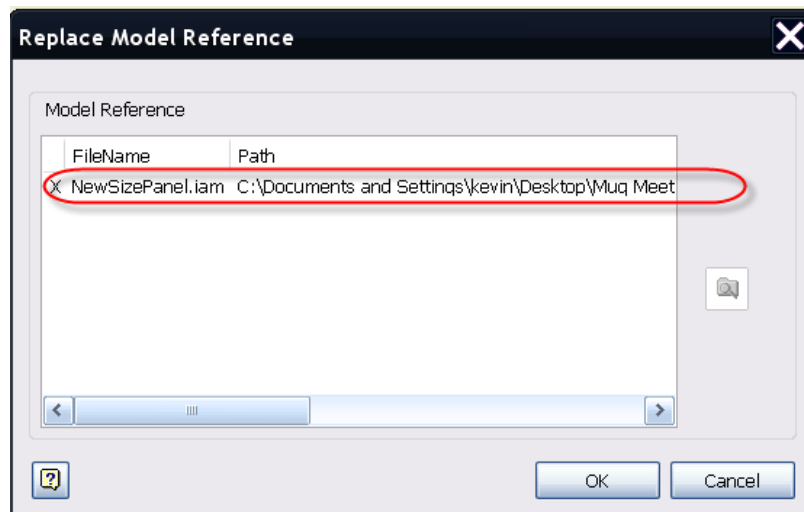
If at any point in the drawing creation there is a need to replace the existing model use the Replace Reference Model command. (Manage Tab>Modify Panel>Replace Reference Model). See image below



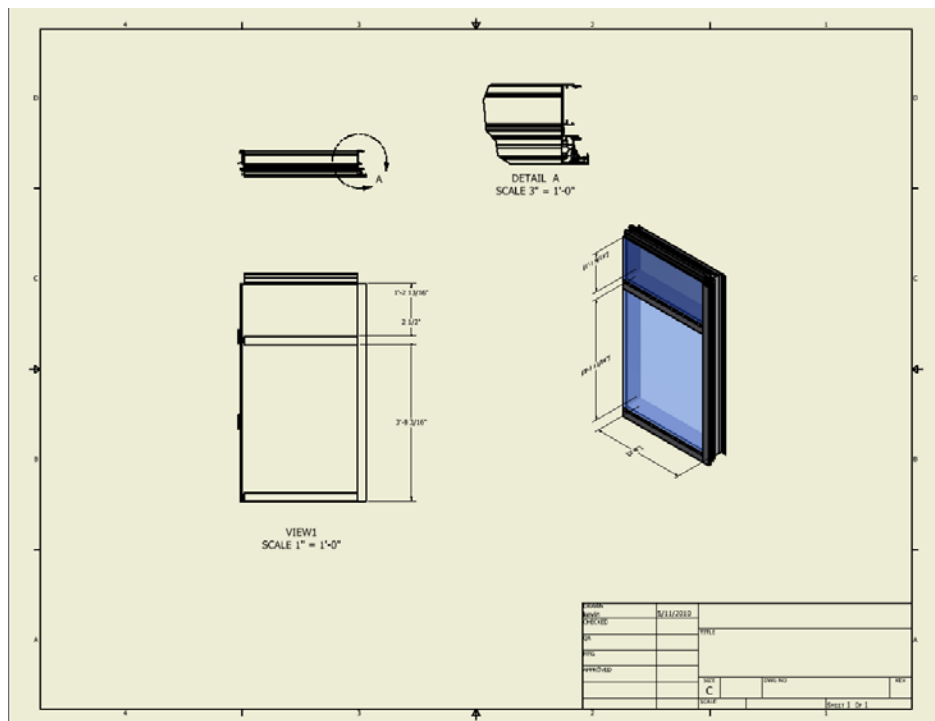
Once the Replace Reference Model dialog box appears, select the model that is going to be replaced and then choose the browse button. This will activate a browse window to find the replacement model. See image below.



Once the replacement model is found, select it and hit open in the browse window. A message will appear asking if you would like to continue with the replacement, select "Yes" to move forward. Now that the replacement model is selected, it will display within the path in the Replace Model Reference dialog box. See image below.



Now select "OK" with the Replace Model Reference dialog box and the new model will replace the old model within the drawing. Views, dimensions, and other annotations will update according to the new model. See image below



Note: Dimension and annotation updates depend on similarity of the geometry between models. If they are two completely different models the dimensions will need to be adjusted manually.