



Tip and Trick Week of 07/4/10

Import Wire Types with AutoCAD Electrical 2011

Wire Types are defined on a per-drawing basis. One of the new features that were added to AutoCAD Electrical 2011 is the ability to import wire types from an existing drawing or template into another drawing. Use the Import button on the Create/Edit Wire Type dialog box to import wire types to the active drawing. Use the Project-wide Utilities to import wire types to a set of project drawings.

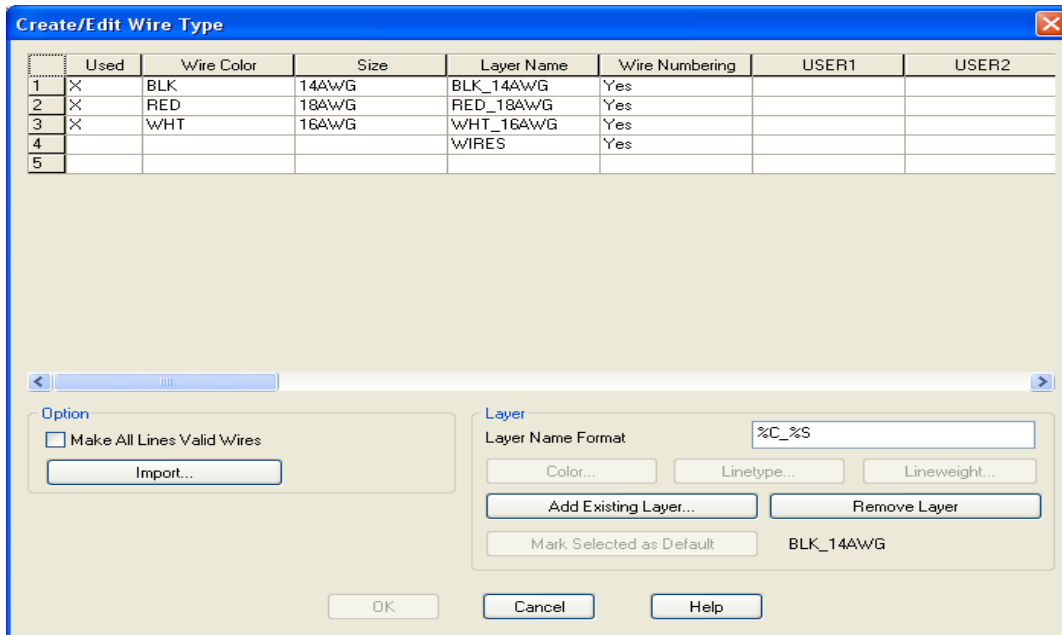
To Start:

Click Schematic tab

Edit Wires/Wire Numbers panel

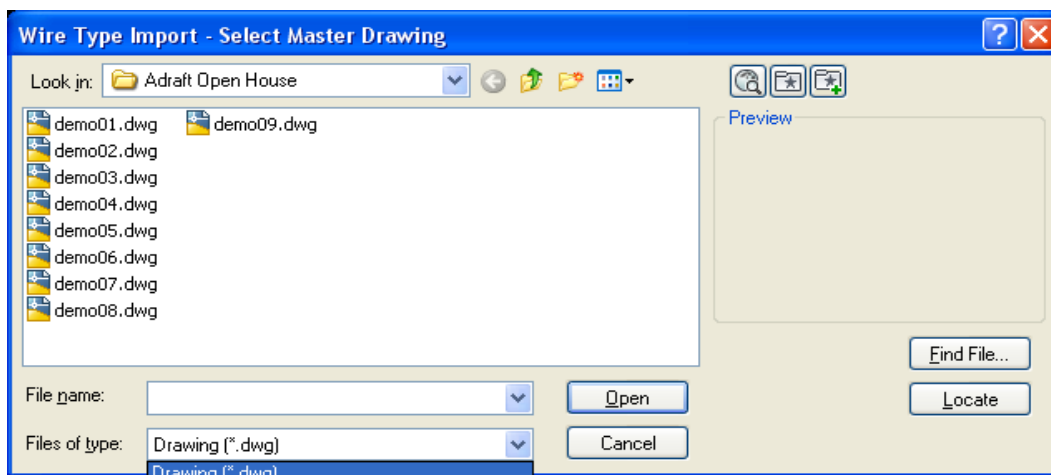
Modify Wire Type drop-down

Create/Edit Wire Type



Click Import.

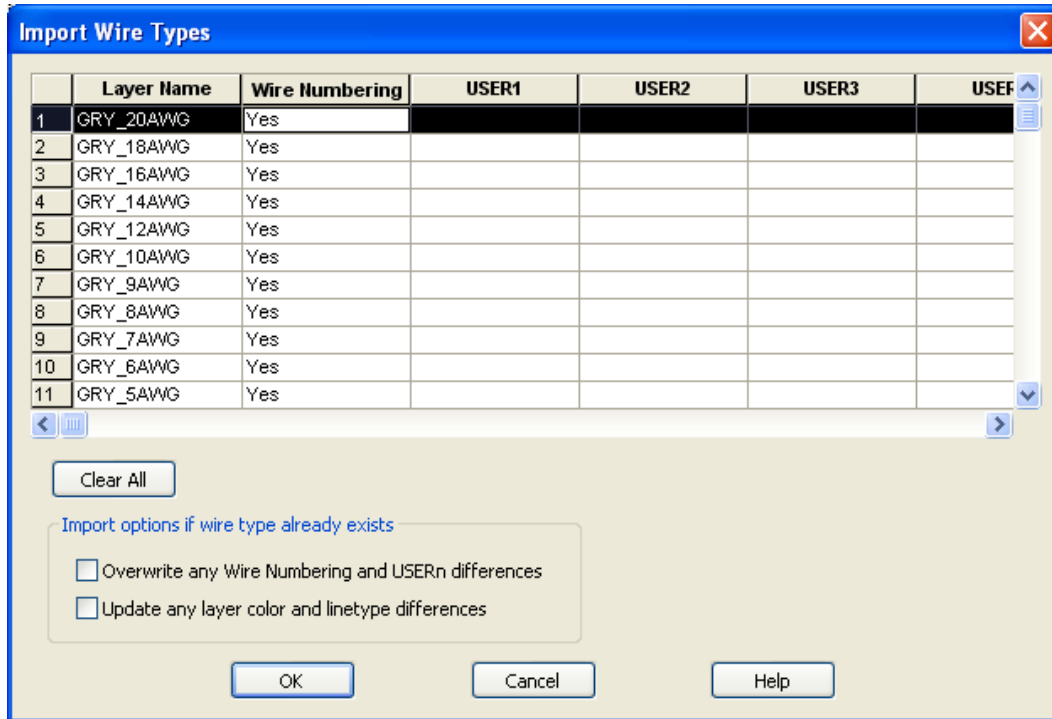
The Wire Type Import - Select Master Drawing dialog box displays.



Select the drawing or drawing template containing the wire types for import.

Click Open.

The Import Wire Types dialog box displays.



Select the wire types for import.

Define how the import function behaves if a wire type exists on the active drawing.

Overwrite any Wire Numbering and USERn differences - if checked, changes the wire numbering setting and all the USER values for the existing wire type to match the imported wire type.

Update any layer color and linetype differences - if checked, changes the color and linetype settings for the existing wire layer to match the imported wire layer.

Click OK.

The selected wire types and settings display in the Create/Edit Wire Type dialog.

Continue adding, importing, and editing wire types in the Create/Edit Wire Type dialog.

Click OK