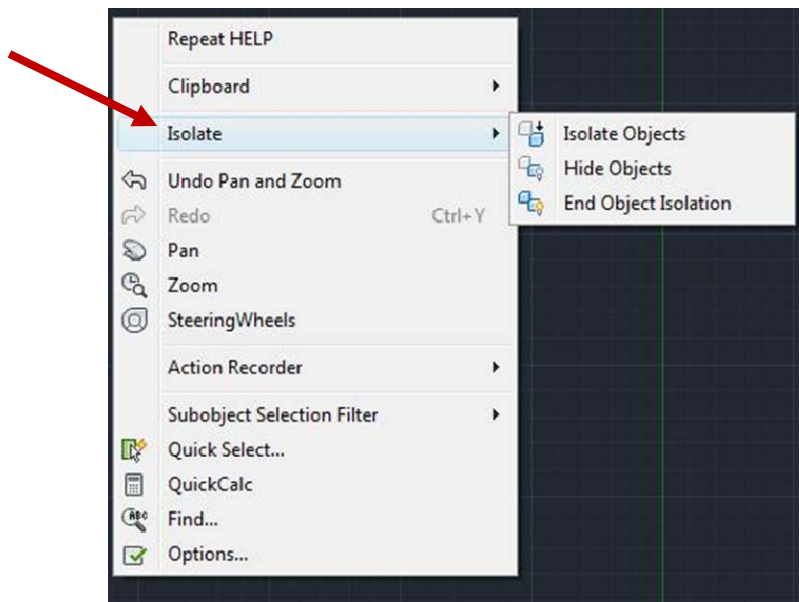


Hiding/Isolating Objects in AutoCAD 2011

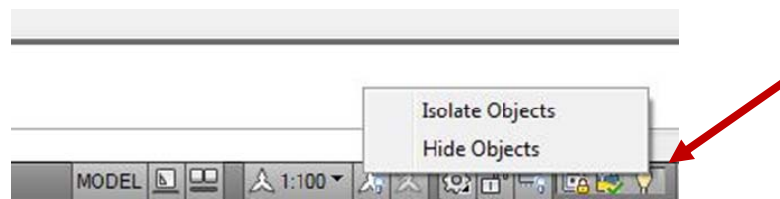
Working in a cluttered drawing, or a part of a drawing that has limited space can be a difficult process. The only option users had was to freeze or hide layers. This was not always a good option if you wanted to work on the same layer as you wanted to freeze. With the new release of AutoCAD, users now have the ability hide and isolate objects independently. This allows users to organize their drawings much easier.

The process itself is not a hard or complex one at all, it will take very little time to become accustom and comfortable with it. To execute the isolate command, users select the objects they want to work on, then select "Isolate" and everything else in the drawing has the visibility turned off. The hide command works in the opposite fashion, the objects that are selected are the ones that get their visibility toggled off. There are two ways users can access the hide and isolate commands.

The first method is through the right click menu.



The second option to access this command is from the status bar at the bottom of your AutoCAD application. There is a new light bulb icon next to the trusted DWG icon. By clicking on it, it gives you the hide/isolate option menu.



Then when you want the visibility of the objects to be reset, simply select "End Object Isolation". Everything that had its visibility toggled off will now be present again in the drawing.